

Identification of *Delia* spp. Flies

onion maggot = *D. antiqua*

bean seed maggot = *D. florilega*

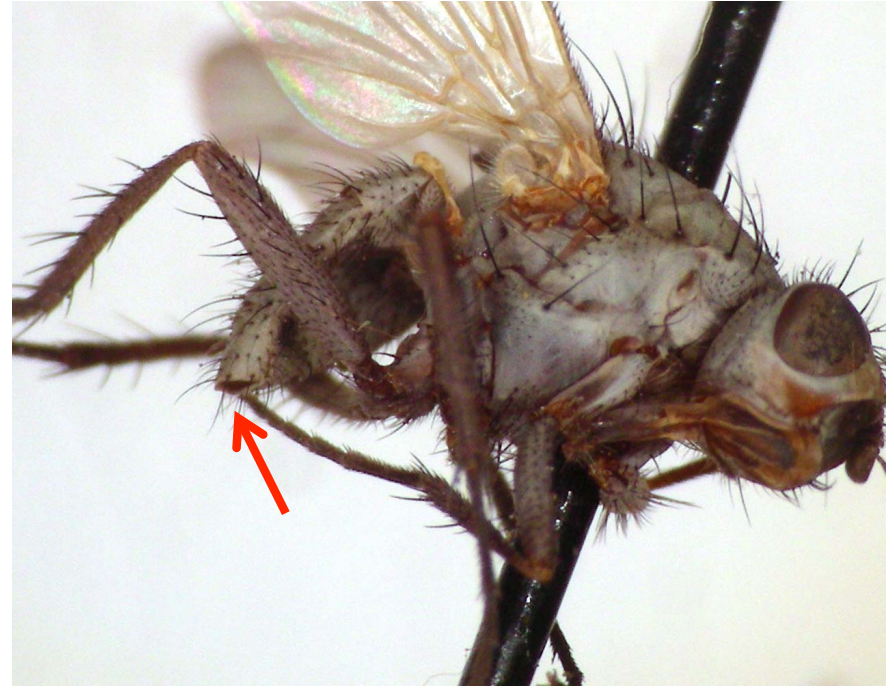
seed corn maggot = *D. platura*

cabbage maggot = *D. radicum* (ex. *brassicae*)

males vs. females



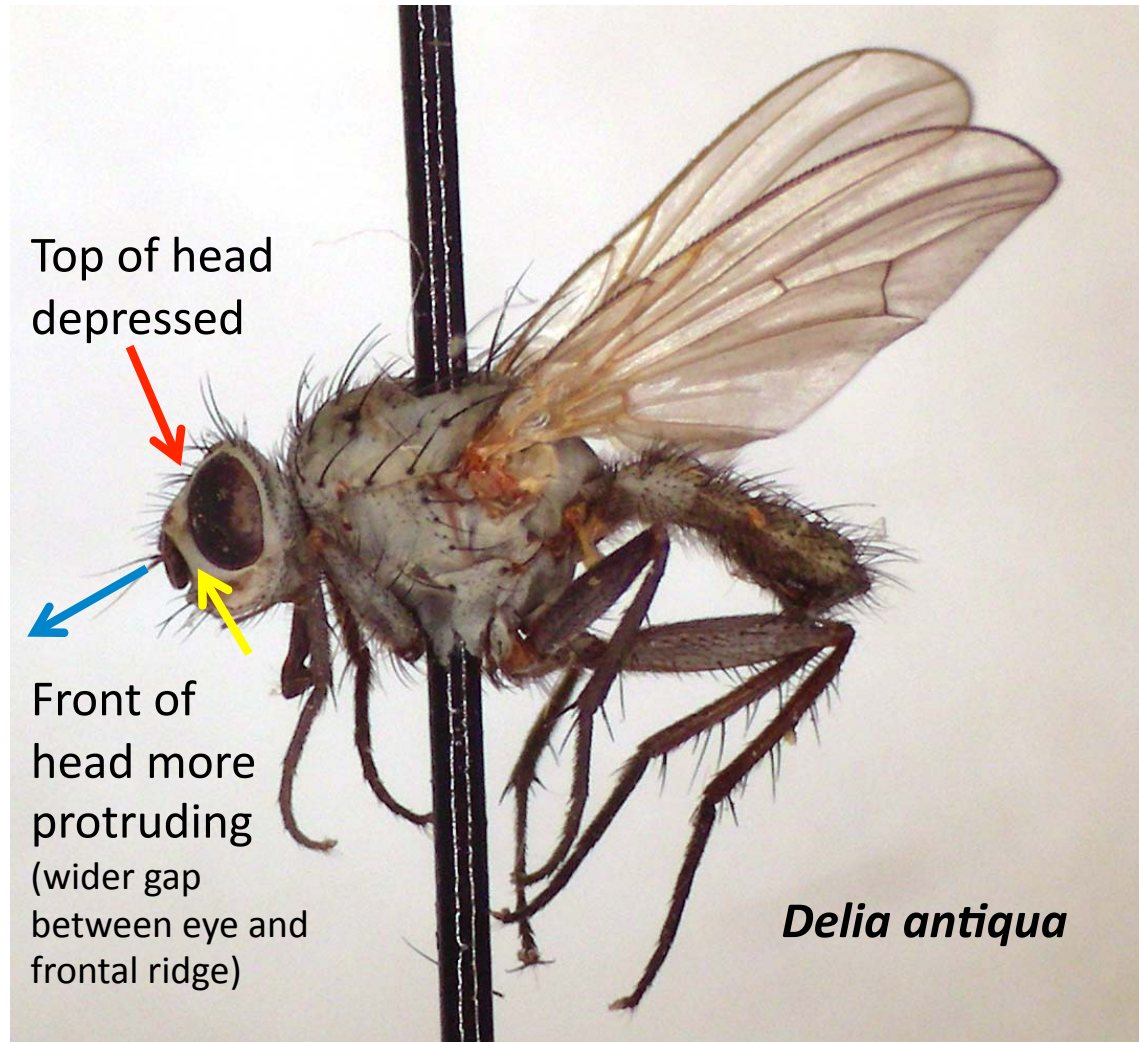
Male with clasper-like appendages bent backward from tip along underside of tip of abdomen, tip of abdomen may appear bulbous



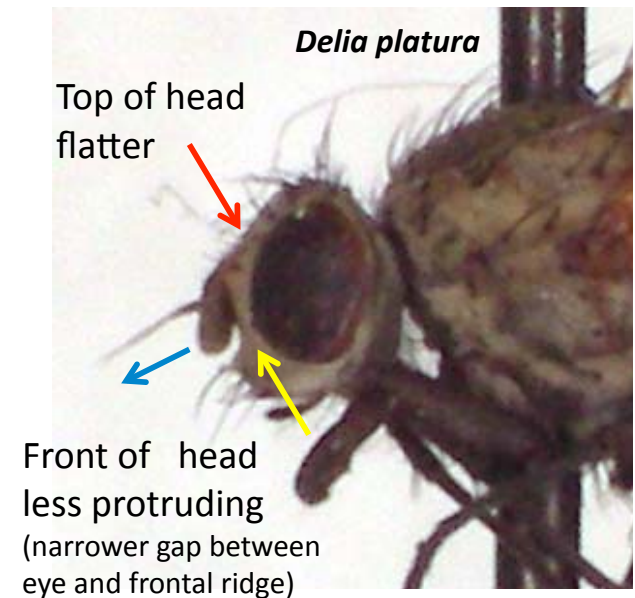
Female with terminal slit or opening at end of abdomen, sometimes with flexible ovipositor protruding, tip generally conical

Delia antiqua– onion maggot

larger-sized (larger or similar to *D. radicum*) , but overall much lighter colored (similar to *D. platura*), host: found only on onions



Best character is larger size (almost twice as large as *platura/florilega*). Compared to *platura*, top of head between eyes more depressed, “face” more protruding in front

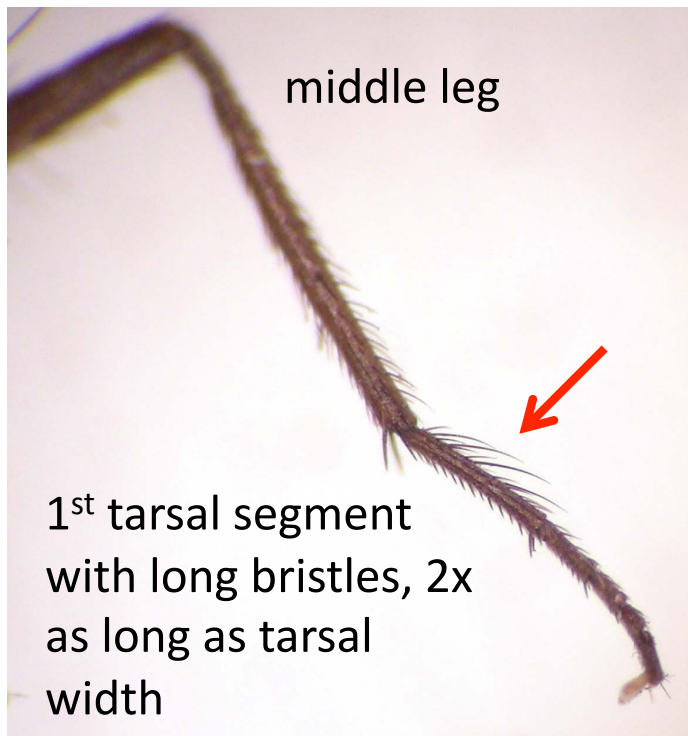


Delia florilega – bean seed maggot
Delia platura – seed corn maggot

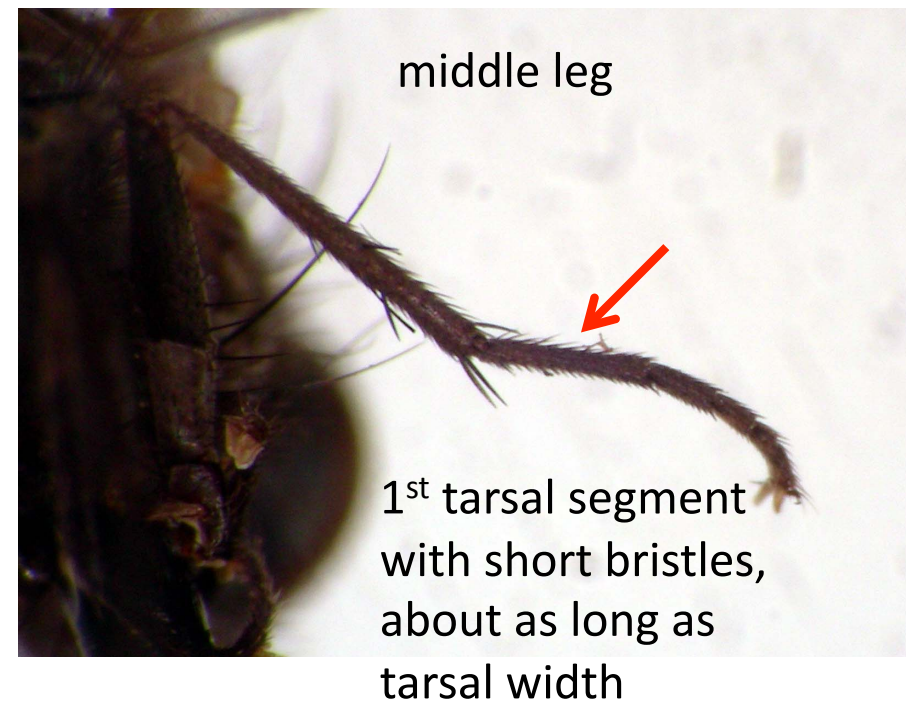
Both species extremely similar in appearance and biology, but both generally smaller in size than *D. antiqua* or *D. radicum*, found on many hosts



Separating **males**:



D. florilega - male



D. platura - male

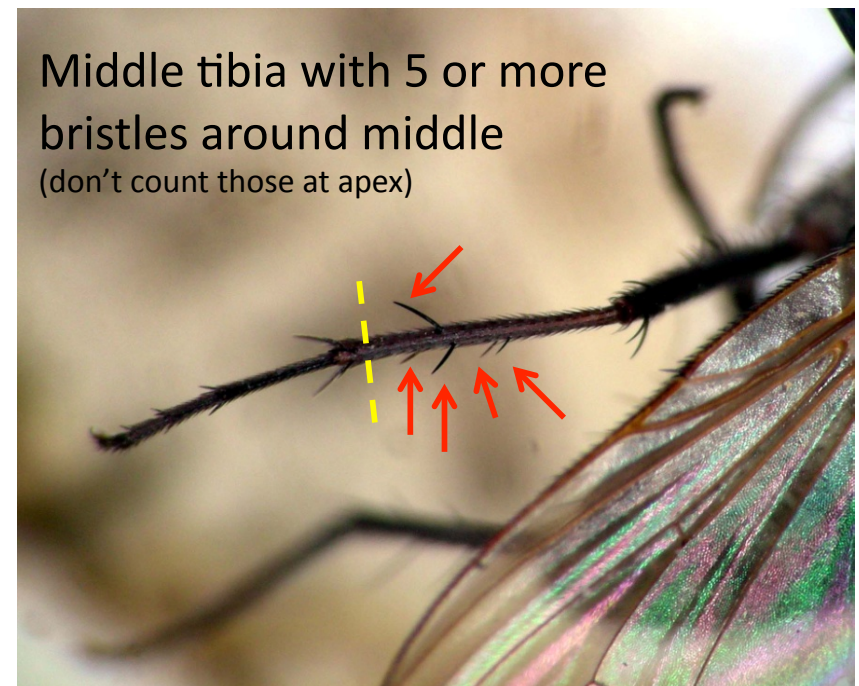
Delia florilega – bean seed maggot
Delia platura – seed corn maggot



Separating **females**:



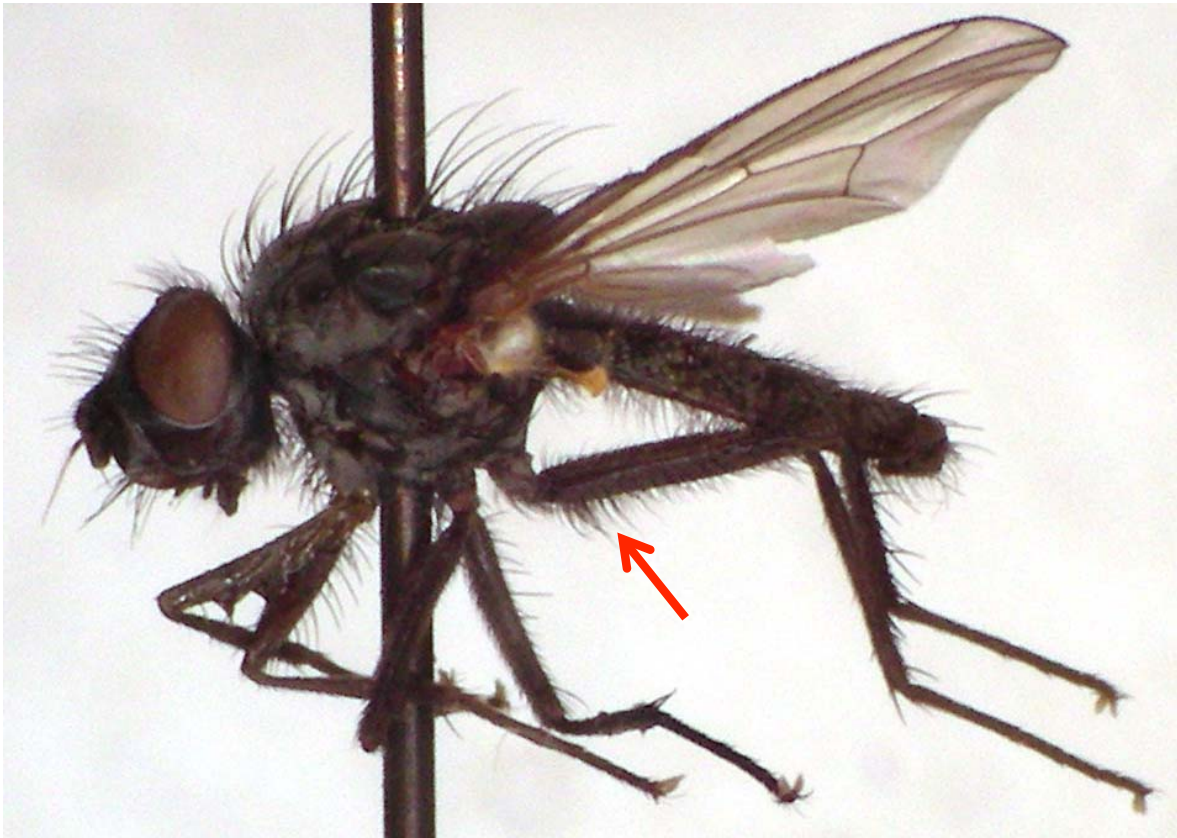
D. florilega - female



D. platura - female

Delia radicum – cabbage maggot

Slightly larger-sized than *platura/lorilega*, darker-colored, very bristly appearing, hosts: only on plants in cabbage/mustard family



Male – hind femur with long, distinctive bristles at base (short or absent on other species)



Females may be lighter colored. No good characters for female except palps are long and thin, legs brownish